

單位: mm

訂購編號 Order No.	型號 Model	主軸鼻端番號 Nose Of Spindle	A	B	C (h6)	D	E	E1	F
36038-06	CLT-06	A2-5	165	74	140	82.563	15	-	5
36038-08	CLT-08	A2-6(A2-5)	210	85	170	106.375	17	23	5
36038-10	CLT-10	A2-8(A2-6)	254	89	220	139.719	18	28	5
36038-12	CLT-12	A2-8	304	106	220	139.719	18	-	5

型號 Model	G	H	J	K	L	M	N max.	N min.	O max.	O min.
CLT-06	116	104.8	21	6-M10×P1.5	14	20	37.8	33.25	15.1	9.1
CLT-08	150	133.4	25	6-M12×P1.75	18	25	46.3	41.9	22.1	10.1
CLT-10	190	171.4	34	6-M16×P2.0	25	30	51.4	47	30.6	9.6
CLT-12	190	171.4	34	6-M16×P2.0	25	30	60.7	55.45	48.6	12.6

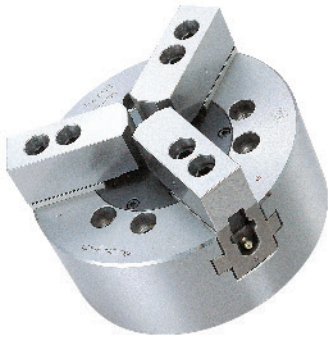
型號 Model	P max.	P min.	Q	R	S	T	U	V	W	X	Y
CLT-06	101.5	81.5	31	12	36	4	M16×P2.0	34	39	73	-
CLT-08	127	106	35	14	36	5	M20×P2.5	38	42	95	104.8
CLT-10	158	133	40	16	36	5	M20×P2.5	45	46	110	133.4
CLT-12	163	133	50	18	36	5	M20×P2.5	50	54	129	-

型號 Model	柱塞行程 Plunger Stroke	爪行程直徑 Jaw Stroke(Diameter)	最高迴轉速(min ⁻¹) Max. Speed	最大拉力 Max. Pull Force	最大靜夾持力 Max. Gripping Force
CLT-06	20mm	8.5mm	5000 R.P.M	1220 kgf 12 KN	3460 kgf 34 KN
CLT-08	21mm	8.8mm	4000 R.P.M	1630 kgf 16 KN	4990 kgf 49 KN
CLT-10	25mm	8.8mm	3500 R.P.M	1930 kgf 19 KN	7140 kgf 70 KN
CLT-12	30mm	10.5mm	3000 R.P.M	2750 kgf 27 KN	10300 kgf 101 KN

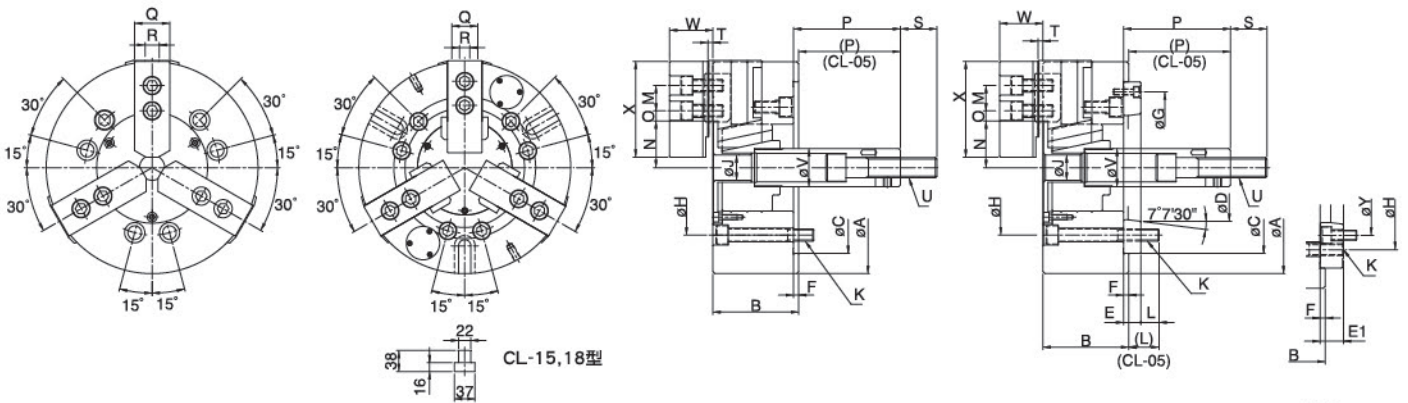
型號 Model	最大設定油壓壓力 Max. Hydr. Pressure	搭配油壓缸 編號/型號 Matching Cylinder	夾持範圍 Gripping Range	重量(kg) Weight
CLT-06	17 kgf/cm ² 1.7 Mpa	NO. 36037-20 L1020	φ9 - φ165	11.1
CLT-08	16 kgf/cm ² 1.6 Mpa	NO. 36037-25 L1225	φ12 - φ210	21.3
CLT-10	19 kgf/cm ² 1.9 Mpa	NO. 36037-25 L1225	φ15 - φ254	32.6
CLT-12	20 kgf/cm ² 2.0 Mpa	NO. 36037-30 L1530	φ20 - φ304	57



單位: mm



訂購編號 Order No.	型號 Model	主軸鼻端番號 Nose Of Spindle	A	B	C (h6)	D	E
36039-05	CL-05	A2-4	135	55	80	63.513	-
39039-06	CL-06	A2-5	165	74	140	82.563	15
39039-08	CL-08	A2-6(A2-5)	210	85	170	106.375	17
39039-10	CL-10	A2-8(A2-6)	254	89	220	139.719	18
39039-12	CL-12	A2-8	304	106	220	139.719	18
39039-15	CL-15	A2-11	381	114	300	196.869	22
39039-18	CL-18	A2-11	450	114	300	196.869	22

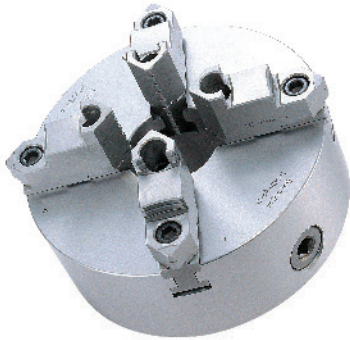


單位: mm

型號 Model	E1	F	G	H	J	K	L	M	N max.	N min.	O max.	O min.	P max.	P min.	Q	R
CL-05	-	7	-	100	-	3-M8×P1.25	14	14	30.4	27.2	17.1	9.6	9	-6	25	10
CL-06	-	5	116	104.8	21	6-M10×P1.5	14	20	37.8	33.25	15.1	9.1	101.5	81.5	31	12
CL-08	23	5	150	133.4	25	6-M12×P1.75	18	25	46.3	41.9	22.1	10.1	127	106	35	14
CL-10	28	5	190	171.4	34	6-M16×P2.0	25	30	51.4	47	30.6	9.6	158	133	40	16
CL-12	-	6	190	171.4	34	6-M16×P2.0	25	30	60.7	55.45	48.6	12.6	163	133	50	18
CL-15	-	6	260	235	-	6-M20×P2.5	32	43	69.05	60.97	58.05	40.05	104	69	62	25.5
CL-18	-	6	260	235	-	6-M20×P2.5	32	43	99.46	91.38	58.05	40.05	92	57	62	25.5

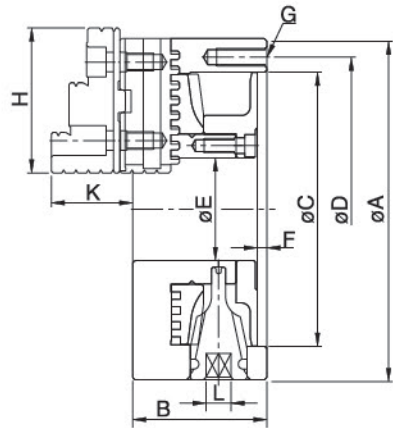
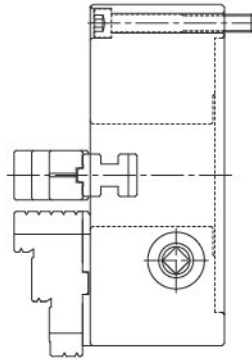
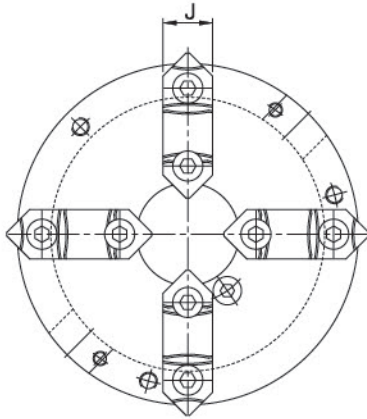
型號 Model	S	T	U	V	W	X	Y	柱塞行程 Plunger Stroke	爪行程直徑 Jaw Stroke(Diameter)	最高迴轉速(min ⁻¹) Max. Speed
CL-05	35	2	M12×P1.75	28	31	62	-	15mm	6.4mm	5500 R.P.M
CL-06	36	4	M16×P2.0	34	39	73	-	20mm	8.5mm	5000 R.P.M
CL-08	36	5	M20×P2.5	38	42	95	104.8	21mm	8.8mm	4600 R.P.M
CL-10	36	5	M20×P2.5	45	46	110	133.4	25mm	8.8mm	4000 R.P.M
CL-12	36	5	M20×P2.5	50	54	129	-	30mm	10.5mm	3200 R.P.M
CL-15	55	7	M30×P3.5	60	68	165	-	35mm	16mm	3000 R.P.M
CL-18	55	7	M30×P3.5	60	68	165	-	35mm	16mm	2700 R.P.M

型號 Model	最大拉力 Max. Pull Force	最大靜夾持力 Max. Gripping Force	最大設定油壓壓力 Max. Hydr. Pressure	搭配油壓缸 編號/型號 Matching Cylinder	夾持範圍 Gripping Range	重量(kg) Weight
CL-05	800 kgf 7.8 KN	2450 kgf 24 KN	25 kgf/cm ² 2.5 Mpa	NO. 36037-15 L0815	φ8 - φ135	6
CL-06	1730 kgf 17 KN	5200 kgf 51 KN	25 kgf/cm ² 2.5 Mpa	NO. 36037-20 L1020	φ18 - φ165	11.4
CL-08	2440 kgf 24 KN	7440 kgf 73 KN	25 kgf/cm ² 2.5 Mpa	NO. 36037-25 L1225	φ12 - φ210	21.9
CL-10	2850 kgf 28 KN	10810 kgf 106 KN	29 kgf/cm ² 2.8 Mpa	NO. 36037-25 L1225	φ16 - φ254	33.4
CL-12	4080 kgf 40 KN	15500 kgf 152 KN	29 kgf/cm ² 2.8 Mpa	NO. 36037-30 L1530	φ18 - φ304	58.5
CL-15	8260 kgf 81 KN	25290 kgf 248 KN	32 kgf/cm ² 3.1 Mpa	NO. 36037-35 L2035	φ68 - φ381	100.6
CL-18	8260 kgf 81 KN	25290 kgf 248 KN	32 kgf/cm ² 3.1 Mpa	NO. 36037-35 L2035	φ100 - φ450	134.3



● PSK-F 前孔型
Front Mounting

● PSK-B 後孔型
Rear Mounting

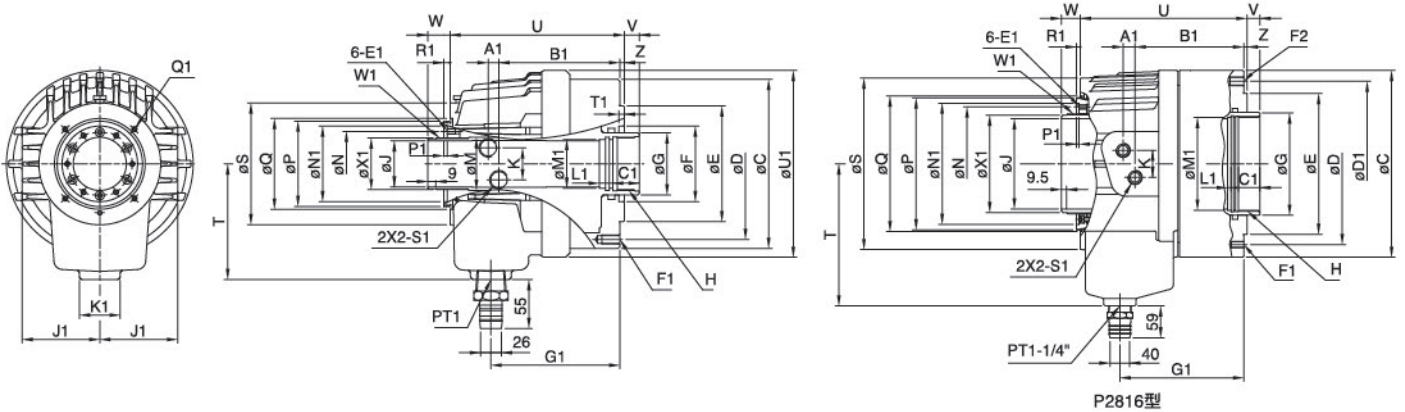


單位: mm

訂購編號 Order No.	型號 Model	A	B	C	D	E	F	G	H	重量(kg) Weight
36040-07	PSK-7B	193	76	155	172	58	5	3-M10×P1.5	82	12.7
36040-09	PSK-9B	233	84	190	210	70	5.5	3-M12×P1.75	93	20.8
36040-12	PSK-12B	310	96	260	285	105	7	3-M12×P1.75	118	43
36040-16	PSK-16B	405	122	345	375	160	8	6-M14×P2.0	150	86.7
36040-57	PSK-7F	193	76	155	172	58	5	3-M10×P1.5	82	12.7
36040-59	PSK-9F	233	84	190	210	70	5.5	3-M12×P1.75	93	20.8
36040-62	PSK-12F	310	96	260	285	105	7	3-M12×P1.75	118	43
36040-66	PSK-16F	405	122	345	375	160	8	6-M14×P2.0	150	86.7

單位: mm

型號 Model	J	K	L	最高迴轉速(min ⁻¹) Max. Speed	外徑把握 O.D. Clamping	內徑把握 I.D. Clamping
PSK-7B	28	43	11	2000 R.P.M	φ8~φ180	φ62~φ170
PSK-9B	32	50	12	2000 R.P.M	φ11~φ220	φ70~φ210
PSK-12B	40	56	14	1800 R.P.M	φ15~φ300	φ90~φ290
PSK-16B	50	75	15	1800 R.P.M	φ30~φ400	φ110~φ380
PSK-7F	28	43	11	2000 R.P.M	φ8~φ180	φ62~φ170
PSK-9F	32	50	12	2000 R.P.M	φ11~φ220	φ70~φ210
PSK-12F	40	56	14	1800 R.P.M	φ15~φ300	φ90~φ290
PSK-16F	50	75	15	1800 R.P.M	φ30~φ400	φ110~φ380

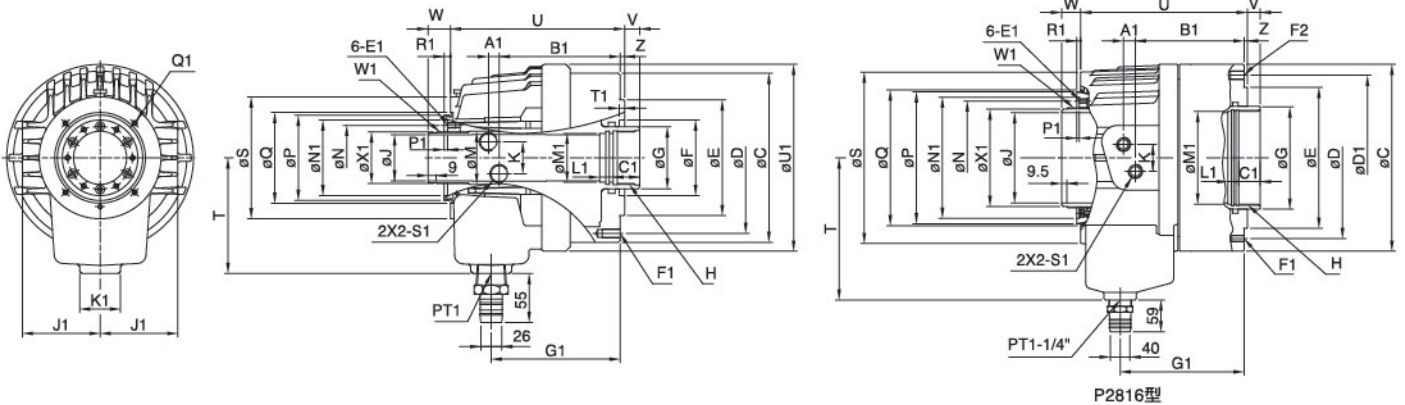


- 鋁合金外型構造，重量比傳統迴轉缸輕，形體結構小型化，在高速迴轉時，保持性能的穩定及減輕機械負擔。
- 內藏止回閥設計，於突發之壓降時仍可保持推力，在溫升時可防止油缸損壞。
- Aluminum-Alloy made outer structure makes the weight lighter than the traditional rotary cylinders; Meanwhile, the compactness and miniaturization enhance the stability and lower the burden of machines.
- With built-in "check valve", work pieces can be effectively prevented from flying out during abrupt failure of pressure.

單位: mm

訂購編號 Order No.	型號 Model	A1	B1	C	C1	D	D1	E (h7)	E1	F	F1	F2
36041-09	P0928	9	109	120	25	100	-	80	8-M5×P0.8	60	6-M8×P1.25	-
36041-10	P1036	11	120	136	25	115	-	100	6-M5×P0.8	65	6-M10×P1.5	-
36041-12	P1246	12	126.5	155	30	130	-	100	6-M6×P1.0	80	12-M10×P1.5	-
36041-15	P1552	12	136	190	30	170	-	130	6-M6×P1.0	85	12-M10×P1.5	-
36041-18	P1875	17.5	154.5	215	35	190	-	160	6-M6×P1.0	125	12-M10×P1.5	-
36041-20	P2091	21	168	240	35	215	-	180	6-M6×P1.0	140	12-M12×P1.75	-
36041-25	P2511	27	191	310	45	275	-	230	6-M6×P1.0	166	12-M16×P2.0	-
36041-28	P2816	22	201	345	45	298	305	260	6-M8×P1.25	-	12-M12×P1.75	12-M16×P2.0

型號 Model	G	G1	H	J	J1	K	K1	L1	M	M1	N	N1	P	P1	Q
P0928	45	114	M38×P1.5	28	60	25	46	15	34.6	34	44	53	59	4	64.8
P1036	48	126	M42×P1.5	36	68	32	46	15	44.6	38	55	64	73	6	80
P1246	65	134	M55×P2	46	76	36	46	15	52.9	50	64	76	85	4	90
P1552	70	145	M60×P2	52	87.5	36	46	15	59.6	55	73	85	96	4	102
P1875	95	162	M85×P2	75	101	36	46	15	84.6	80	98	108	121	4	131
P2091	110	183	M100×P2	91	110	36	46	15	99.6	95	108	120	138	4	147
P2511	140	218	M130×P2	117.5	135	40	46	15	134.6	125	148	160	178	5	184
P2816	190	229	M175×P3	166.5	180	50	60	15	185	171.5	210	224	244	5	250



單位: mm

型號 Model	Q1	R1	S	S1	T	T1	U	U1	V max.	V min	W max.	W1
P0928	4-M4×P0.7 (PCDφ76)	5	95	PT 1/4	105	4	159	137	9.05	-0.95	33.95	M34×P1.5
P1036	4-M5×P0.8 (PCDφ88)	5	105	PT 3/8	115	6	179	154	10	-5	39	M44×P1.5
P1246	4-M5×P0.8 (PCDφ98)	6	116	PT 1/2	115	6	184	172	10	-5	40	M52×P1.5
P1552	4-M6×P1.0 (PCDφ110)	7	135	PT 1/2	130	6	196	210	17	-5	47	M58×P1.5
P1875	4-M6×P1.0 (PCDφ155)	7	164	PT 1/2	160	4	230	235	20	-5	50	M84×P2.0
P2091	4-M6×P1.0 (PCDφ165)	7	180	PT 1/2	185	6	253	260	25	-5	55	M99×P2.0
P2511	4-M6×P1.0 (PCDφ206)	7	230	PT 1/2	210	7	304	302	24	-6	55	M134×P2.0
P2816	6-M6×P1.0 (PCDφ275)	7	316	PT 3/4	262.5	-	308	-	24	-6	65	M185×P3.0

型號 Model	W min	X1	Z	活塞行程 Piston Stroke	最高迴轉速(min ⁻¹) Max. Speed	活塞直徑 Piston Dia	GD ² (kg·m ²)	流量(l/min) Oil Leakage Rate	重量(kg) Weight
P0928	23.95	31.8	5	10mm	8000 R.P.M	90mm	0.008	3.0	-
P1036	24	42	5	15mm	8000 R.P.M	105mm	0.012	3.0	9
P1246	25	50	5	15mm	7000 R.P.M	125mm	0.019	3.0	11.9
P1552	25	56	5	22mm	6200 R.P.M	155mm	0.053	3.9	17.3
P1875	25	81	5	25mm	4700 R.P.M	180mm	0.096	4.2	26.4
P2091	25	96	5	30mm	3800 R.P.M	205mm	0.16	4.5	37
P2511	25	130	6	30mm	2800 R.P.M	250mm	0.5	7.0	63
P2816	35	180	6	30mm	2000 R.P.M	280mm	3.5	8.4	-

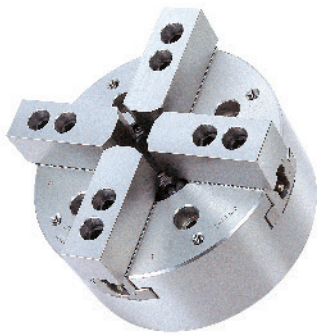
型號 Model	最高使用壓力 Max. Pressure		活塞面積 Piston Area(cm ²)		最大推(拉)力 Max. Operating Force			
			推力側 Push Side	拉力側 Pull Side	推力側 Push Side	拉力側 Pull Side	推力側 Push Side	拉力側 Pull Side
P0928	40 kgf/cm ²	3.9 Mpa	54	47.5	2000 kgf	19.6 KN	1750 kgf	12.7 KN
P1036	40 kgf/cm ²	3.9 Mpa	70	68	2500 kgf	24.5 KN	2400 kgf	23.5 KN
P1246	40 kgf/cm ²	3.9 Mpa	100	89	3700 kgf	36.2 KN	3200 kgf	31.3 KN
P1552	40 kgf/cm ²	3.9 Mpa	160	150	5900 kgf	57.8 KN	5500 kgf	53.9 KN
P1875	40 kgf/cm ²	3.9 Mpa	198	183	7200 kgf	70.5 KN	6700 kgf	65.6 KN
P2091	40 kgf/cm ²	3.9 Mpa	252	235	9200 kgf	90.1 KN	8600 kgf	84.3 KN
P2511	40 kgf/cm ²	3.9 Mpa	348	336	12400 kgf	121.5 KN	12000 kgf	117.6 KN
P2816	40 kgf/cm ²	3.9 Mpa	346	332	12200 kgf	119.6 KN	11800 kgf	115.7 KN



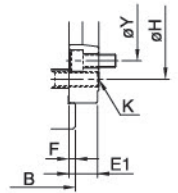
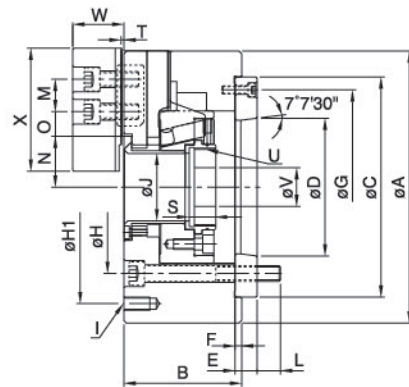
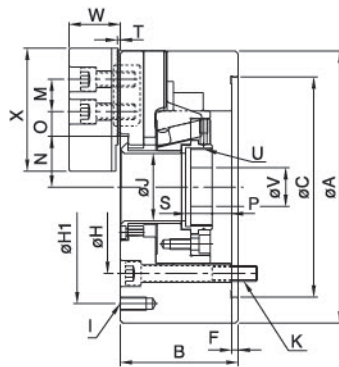
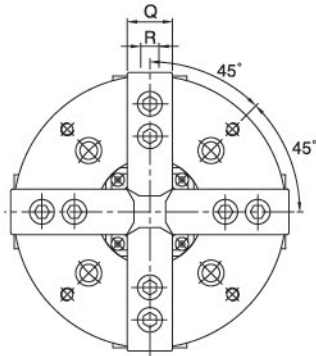
36042

四爪高速中空油壓夾頭 4-JAW HIGH SPEED HOLLOW POWER CHUCK

單位: mm



訂購編號 Order No.	型號 Model	主軸鼻端番號 Nose Of Spindle	A	B	C (h6)	D
36042-26	OPF-206	A2-5	169	81	140	82.563
36042-28	OPF-208	A2-6(A2-5)	210	91	170	106.375
36042-30	OPF-210	A2-8(A2-6)	254	100	220	139.719
36042-32	OPF-212	A2-8	304	110	220	139.719
36042-35	OPF-215	A2-11(A2-8)	381	133	300	196.869



型號 Model	E	E1	F	G	H	H1	I	J	K	L
OPF-206	15	-	5	116	104.8	PCD φ145	4-M10×P1.5	45	4-M10×P1.5	16
OPF-208	17	23	5	150	133.4	PCD φ180	4-M10×P1.5	52	4-M12×P1.75	18
OPF-210	18	28	5	190	171.4	PCD φ225	4-M12×P1.75	75	4-M16×P2.0	19
OPF-212	18	-	6	190	171.4	PCD φ250	4-M12×P1.75	91	4-M16×P2.0	25
OPF-215	22	33	6	260	235	PCD φ324	4-M12×P1.75	117.5	4-M20×P2.5	28

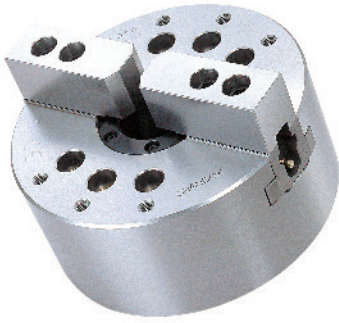
型號 Model	M	N max.	N min.	O max.	O min.	P max.	P min.	Q	R	S	T	U	V
OPF-206	20	32.35	29.6	24	7	11	-1	31	12	19	2	M55×P2	20
OPF-208	25	39.1	35.4	30	10	14.5	-1.5	35	14	20.5	2	M60×P2	30
OPF-210	30	51.5	47.1	34	12	8.5	-10.5	40	16	25	2	M85×P2	40
OPF-212	30	61.6	56.3	46	12	8	-15	50	21	28	2	M100×P2	50
OPF-215	43	82.3	77	46	13	7.5	-15	62	22	42.5	5	M130×P2	48

型號 Model	W	X	Y	通孔直徑 Thru-Hole(Diameter)	柱塞行程 Plunger Stroke	爪行程直徑 Jaw Stroke(Diameter)	最高迴轉速(min ⁻¹) Max. Speed	重量(kg) Weight
OPF-206	37	73	-	45mm	12mm	5.5mm	4500 R.P.M	14.2
OPF-208	39	95	104.8	52mm	16mm	7.4mm	3600 R.P.M	24.5
OPF-210	43	110	133.4	75mm	19mm	8.8mm	3200 R.P.M	38.1
OPF-212	51	129	-	91mm	23mm	10.6mm	2500 R.P.M	60.5
OPF-215	66	165	171.4	117.5mm	23mm	10.6mm	1800 R.P.M	111.5

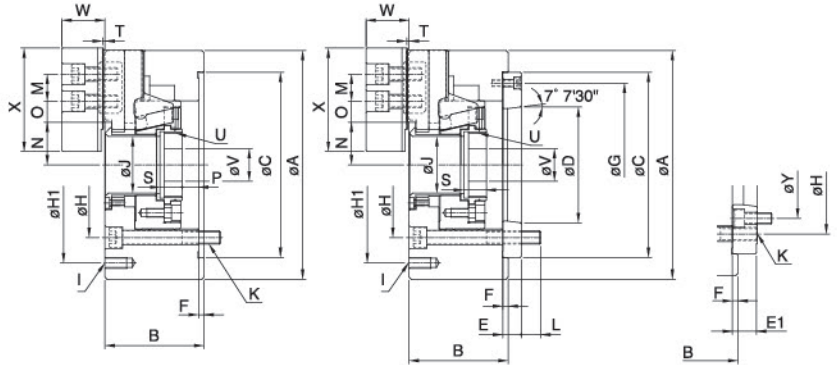
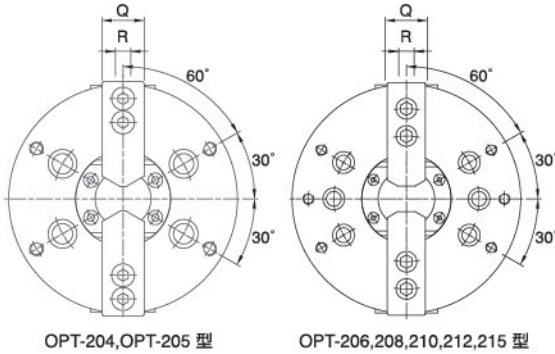
型號 Model	最大拉力 Max. Pull Force		最大靜夾持力 Max. Gripping Force		最大設定油壓壓力 Max. Hydr. Pressure		搭配油壓缸 編號/型號 Matching Cylinder	夾持範圍 Gripping Range
OPF-206	1630 kgf	16 KN	4180 kgf	41 KN	21 kgf/cm ²	2.1 Mpa	NO. 36041-12 P1246	φ22 - φ169
OPF-208	2440 kgf	24 KN	6010 kgf	59 KN	19 kgf/cm ²	1.9 Mpa	NO. 36041-15 P1552	φ25 - φ210
OPF-210	3160 kgf	31 KN	8050 kgf	79 KN	20 kgf/cm ²	2.0 Mpa	NO. 36041-18 P1875	φ28 - φ254
OPF-212	4080 kgf	40 KN	10400 kgf	102 KN	20 kgf/cm ²	2.0 Mpa	NO. 36041-20 P2091	φ35 - φ304
OPF-215	5400 kgf	53 KN	13600 kgf	134 KN	19 kgf/cm ²	1.9 Mpa	NO. 36041-25 P2511	φ63 - φ381



單位: mm



訂購編號 Order No.	型號 Model	主軸鼻端番號 Nose Of Spindle	A	B	C (h6)	D	E	E1	F
36043-04	OPT-204	-	110	59	85	-	-	-	4
36043-05	OPT-205	A2-4	135	60	110	63.513	20	-	4
36043-06	OPT-206	A2-5	169	81	140	82.563	15	-	5
36043-08	OPT-208	A2-6(A2-5)	210	91	170	106.375	17	23	5
36043-10	OPT-210	A2-8(A2-6)	254	100	220	139.719	18	28	5
36043-12	OPT-212	A2-8	304	110	220	139.719	18	-	6
36043-15	OPT-215	A2-11(A2-8)	381	133	300	196.869	22	33	6

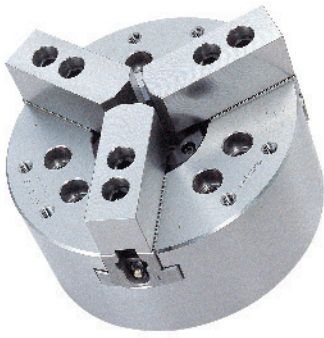


單位: mm

型號 Model	G	H	H1	I	J	K	L	M	N max.	N min.	O max.	O min.	P max.	P min.
OPT-204	-	70.6	-	-	26	4-M10×P1.5	-	14	23	20.3	11.5	6.7	3.5	-6.5
OPT-205	96	82.6	PCD φ118	4-M8×P1.25	33	4-M10×P1.5	15	14	26.2	23.5	19	6	1	-9
OPT-206	116	104.8	PCD φ145	6-M10×P1.5	45	6-M10×P1.5	16	20	32.35	29.6	24	7	11	-1
OPT-208	150	133.4	PCD φ180	6-M10×P1.5	52	6-M12×P1.75	18	25	39.1	35.4	30	10	14.5	-1.5
OPT-210	190	171.4	PCD φ225	6-M12×P1.75	75	6-M16×P2.0	19	30	51.5	47.1	34	12	8.5	-10.5
OPT-212	190	171.4	PCD φ250	6-M12×P1.75	91	6-M16×P2.0	25	30	61.6	56.3	46	12	8	-15
OPT-215	260	235	PCD φ324	6-M12×P1.75	117.5	6-M20×P2.5	28	43	82.3	77	46	13	7	-16

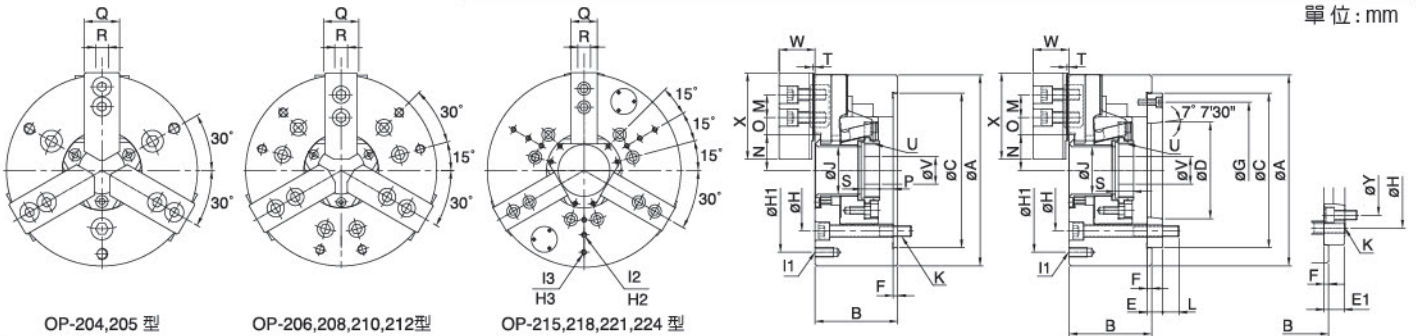
型號 Model	Q	R	S	T	U	V	W	X	Y	通孔直徑 Thru-Hole(Diameter)	柱塞行程 Plunger Stroke	爪行程直徑 Jaw Stroke(Diameter)	最高迴轉速(min ⁻¹) Max. Speed
OPT-204	23	10	17.5	2	M32×P1.5	12	24	49.5	-	26mm	10mm	5.4mm	8000 R.P.M
OPT-205	25	10	20	2	M40×P1.5	12	31.5	62	-	33mm	10mm	5.4mm	7000 R.P.M
OPT-206	31	12	19	2	M55×P2	20	37	73	-	45mm	12mm	5.5mm	6000 R.P.M
OPT-208	35	14	20.5	2	M60×P2	30	39	95	104.8	52mm	16mm	7.4mm	5000 R.P.M
OPT-210	40	16	25	2	M85×P2	40	43	110	133.4	75mm	19mm	8.8mm	4200 R.P.M
OPT-212	50	21	28	2	M100×P2	50	51	129	-	91mm	23mm	10.6mm	3300 R.P.M
OPT-215	62	22	42.5	5	M130×P2	48	66	165	171.4	117.5mm	23mm	10.6mm	2500 R.P.M

型號 Model	最大拉力 Max. Pull Force	最大靜夾持力 Max. Gripping Force	最大設定油壓壓力 Max. Hydr. Pressure	搭配油壓缸 編號/型號 Matching Cylinder	夾持範圍 Gripping Range	重量(kg) Weight
OPT-204	920 kgf	9 KN	15.5 kgf/cm ² 1.5 Mpa	NO. 36041-10 P1036	φ7 - φ110	3.6
OPT-205	1120 kgf	11 KN	19 kgf/cm ² 1.9 Mpa	NO. 36041-10 P1036	φ10 - φ135	6.5
OPT-206	1420 kgf	14 KN	18.5 kgf/cm ² 1.8 Mpa	NO. 36041-12 P1246	φ13 - φ169	13.1
OPT-208	2240 kgf	22 KN	17 kgf/cm ² 1.7 Mpa	NO. 36041-15 P1552	φ13 - φ210	23
OPT-210	2850 kgf	28 KN	18 kgf/cm ² 1.8 Mpa	NO. 36041-18 P1875	φ30 - φ254	35.9
OPT-212	3670 kgf	36 KN	18 kgf/cm ² 1.8 Mpa	NO. 36041-20 P2091	φ35 - φ304	56.6
OPT-215	4790 kgf	47 KN	17 kgf/cm ² 1.7 Mpa	NO. 36041-25 P2511	φ35 - φ381	103.2



訂購編號 Order No.	型號 Model	主軸鼻端番號 Nose Of Spindle	A	B	C (h6)	D	E
36044-04	OP-204	-	110	59	85	-	-
36044-05	OP-205	A2-4	135	60	110	63.513	20
36044-06	OP-206	A2-5	169	81	140	82.563	15
36044-08	OP-208	A2-6(A2-5)	210	91	170	106.375	17
36044-10	OP-210	A2-8(A2-6)	254	100	220	139.719	18
36044-12	OP-212	A2-8	304	110	220	139.719	18
36044-15	OP-215	A2-11(A2-8)	381	133	300	196.869	22
36044-18	OP-218	A2-11(A2-8)	450	133	300	196.869	22
36044-21	OP-221	A2-15(A2-11)	530	140	380	285.775	27
36044-24	OP-224	A2-20(A2-15)	610	149	520	412.775	27

單位: mm



OP-204,205 型

OP-206,208,210,212型

OP-215,218,221,224 型

型號 Model	E1	F	G	H	H1	I1	H2	I2	H3	I3
OP-204	-	4	-	70.6	-	-	-	-	-	-
OP-205	-	4	96	82.6	PCD φ118	3-M8×P1.25	-	-	-	-
OP-206	-	5	116	104.8	PCD φ145	6-M10×P1.5	-	-	-	-
OP-208	23	5	150	133.4	PCD φ180	6-M10×P1.5	-	-	-	-
OP-210	28	5	190	171.4	PCD φ225	6-M12×P1.75	-	-	-	-
OP-212	-	6	190	171.4	PCD φ250	6-M12×P1.75	-	-	-	-
OP-215	33	6	260	235	-	-	PCD φ230	3-M12×P1.75	PCD φ300	3-M12×P1.75
OP-218	33	6	260	235	PCD φ230	3-M12×P1.75	PCD φ300	3-M12×P1.75	PCD φ380	3-M12×P1.75
OP-221	41	6	330.2	330.2	PCD φ300	3-M16×P2.0	PCD φ380	3-M16×P2.0	PCD φ460	3-M16×P2.0
OP-224	42	6	463.6	463.6	PCD φ350	3-M16×P2.0	PCD φ450	3-M16×P2.0	PCD φ550	3-M16×P2.0

型號 Model	J	K	L	M	N max.	N min.	O max.	O min.	P max.	P min.	Q	R	S	T
OP-204	26	3-M10×P1.5	-	14	23	20.3	11.5	6.7	3.5	-6.5	23	10	17.5	2
OP-205	33	3-M10×P1.5	15	14	26.2	23.5	19	6	1	-9	25	10	20	2
OP-206	45	6-M10×P1.5	16	20	32.35	29.6	24	7	11	-1	31	12	19	2
OP-208	52	6-M12×P1.75	18	25	39.1	35.4	30	10	14.5	-1.5	35	14	20.5	2
OP-210	75	6-M16×P2.0	19	30	51.5	47.1	34	12	8.5	-10.5	40	16	25	2
OP-212	91	6-M16×P2.0	25	30	61.6	56.3	46	12	8	-15	50	21	28	2
OP-215	117.5	6-M20×P2.5	28	43	82.3	77	46	13	7.5	-16	62	22	42.5	5
OP-218	120	6-M20×P2.5	28	43	83.8	78.5	78	18	7.5	-16	62	22	42.5	5
OP-221	180	6-M24×P3.0	33	60	119.6	114.3	63.3	21.3	10.5	-13	65	25	42.5	5
OP-224	205	6-M24×P3.0	37	60	134.4	128.4	87.3	21.3	13.5	-11	65	25	42.5	5

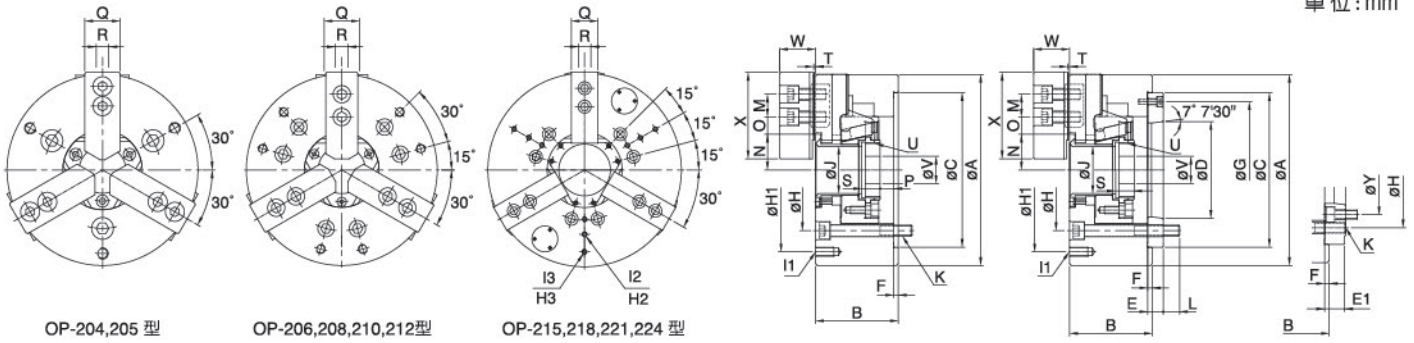
型號 Model	U	V	W	X	Y	通孔直徑 Thru-Hole(Diameter)	柱塞行程 Plunger Stroke	爪行程直徑 Jaw Stroke(Diameter)	最高迴轉速(min ⁻¹) Max. Speed
OP-204	M32×P1.5	12	24	49.5	-	26mm	10mm	5.4mm	8000 R.P.M
OP-205	M40×P1.5	12	31.5	62	-	33mm	10mm	5.4mm	7000 R.P.M
OP-206	M55×P2	20	37	73	-	45mm	12mm	5.5mm	6000 R.P.M
OP-208	M60×P2	30	39	95	104.8	52mm	16mm	7.4mm	5000 R.P.M
OP-210	M85×P2	40	43	110	133.4	75mm	19mm	8.8mm	4200 R.P.M



36044

三爪高速中空油壓夾頭 3-JAW HIGH SPEED HOLLOW POWER CHUCK

單位: mm



OP-204,205 型

OP-206,208,210,212型

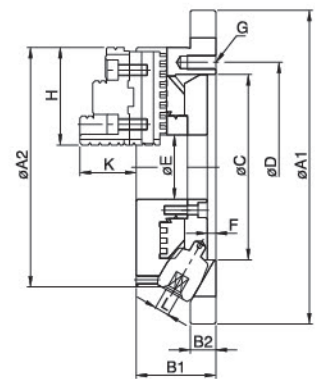
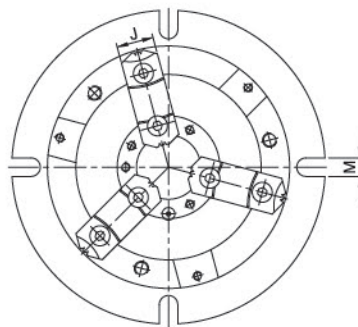
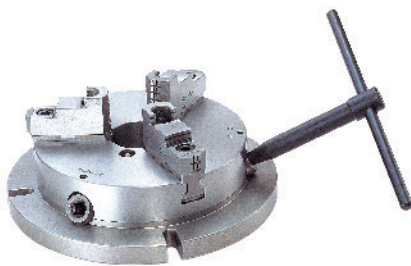
OP-215,218,221,224 型

型號 Model	U	V	W	X	Y	通孔直徑 Thru-Hole(Diameter)	柱塞行程 Plunger Stroke	爪行程直徑 Jaw Stroke(Diameter)	最高迴轉速(min ⁻¹) Max. Speed
OP-212	M100×P2	50	51	129	-	91mm	23mm	10.6mm	3300 R.P.M
OP-215	M130×P2	48	66	165	171.4	117.5mm	23mm	10.6mm	2500 R.P.M
OP-218	M130×P2	48	66	165	171.4	120mm	23mm	10.6mm	2000 R.P.M
OP-221	M195×P2	80	73.5	180	235	180mm	23mm	10.6mm	1700 R.P.M
OP-224	M220×P3	80	73.5	180	330.2	205mm	26mm	12mm	1400 R.P.M

型號 Model	最大拉力 Max. Pull Force	最大靜夾持力 Max. Gripping Force	最大設定油壓壓力 Max. Hydr. Pressure	搭配油壓缸 編號/型號 Matching Cylinder	夾持範圍 Gripping Range	重量(kg) Weight			
OP-204	1428 kgf	14 KN	2850 kgf	28 KN	24 kgf/cm ²	2.3 Mpa	NO. 36041-10 P1036	φ7~φ110	3.8
OP-205	1730 kgf	17 KN	3570 kgf	35 KN	29 kgf/cm ²	2.8 Mpa	NO. 36041-10 P1036	φ10~φ135	6.1
OP-206	2140 kgf	21 KN	5710 kgf	56 KN	28 kgf/cm ²	2.7 Mpa	NO. 36041-12 P1246	φ13~φ169	12.5
OP-208	3360 kgf	33 KN	8360 kgf	82 KN	26 kgf/cm ²	2.5 Mpa	NO. 36041-15 P1552	φ13~φ210	21.9
OP-210	4280 kgf	42 KN	11010 kgf	108 KN	27 kgf/cm ²	2.6 Mpa	NO. 36041-18 P1875	φ30~φ254	33.7
OP-212	5500 kgf	54 KN	14380 kgf	141 KN	27 kgf/cm ²	2.6 Mpa	NO. 36041-20 P2091	φ35~φ304	55.3
OP-215	7140 kgf	70 KN	18250 kgf	179 KN	24.5 kgf/cm ²	2.4 Mpa	NO. 36041-25 P2511	φ35~φ381	106.8
OP-218	7140 kgf	70 KN	18250 kgf	179 KN	24.5 kgf/cm ²	2.4 Mpa	NO. 36041-25 P2511	φ40~φ450	152
OP-221	9080 kgf	89 KN	23760 kgf	233 KN	31.5 kgf/cm ²	3.0 Mpa	NO. 36041-28 P2816	φ115~φ530	195.2
OP-224	9080 kgf	89 KN	23760 kgf	233 KN	31.5 kgf/cm ²	3.0 Mpa	NO. 36041-28 P2816	φ140~φ610	269.4

36045

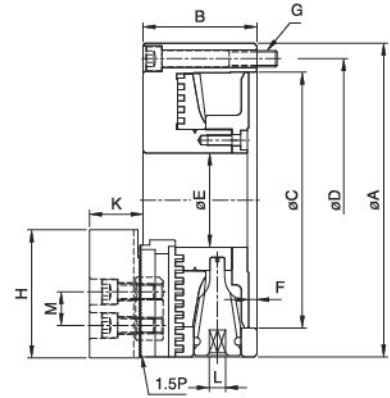
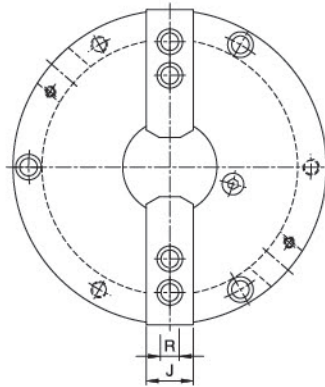
超薄型強力三爪 POWERFUL TYPE SUPER THIN CHUCKS



- 把手和盤面成30°角，旋轉操作更便利。
- 薄型設計，可增加機械加工之容許長度。
- 外徑成凸緣設計，裝卸容易。
- 強力型設計可共用生爪。
- The handle with an angle of 30 degrees is much convenient for operations.
- The "super thin thickness" design of chucks increase the "allowable distance" of machining operations.
- Chuck flange makes loading and unloading operations simpler and more convenient.
- Hard jaws and Soft jaws can be used alternatively.

單位: mm

訂購編號 Order No.	型號 Model	A1	A2	B1	B2	C	D	E	F	G	H	J	K	L	M	外徑把握 O.D. Clamping	內徑把握 I.D. Clamping	重量(kg) Weight
36045-06	NBK-06	220	170	58	18	130	147	45	6	3-M10×P1.5	68	26	40	110	13	φ8~φ160	φ48~φ150	10.6
36045-08	NBK-08	270	210	65	20	155	172	60	6	3-M10×P1.5	82	28	43	11	13	φ11~φ200	φ62~φ190	18.1
36045-10	NBK-10	315	255	73	20	190	210	80	6	3-M12×P1.75	93	32	52	12	16	φ12~φ250	φ72~φ240	27.9
36045-12	NBK-12	370	305	80	22	250	285	105	5	3-M12×P1.75	118	40	59	14	18	φ15~φ300	φ86~φ290	42.9



◆ 特點配合圖示說明 Illustrate:



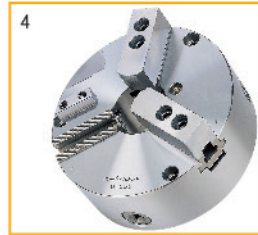
- 可替代修整油壓生爪成型盤。
- Can be used as "Forming plate" for machining soft jaws.



- 硬爪與油壓夾盤硬爪共用。
- Hard jaws are interchangeable with those of power chucks.



- 爪仔可前後任意調整加大夾持工件範圍。
- Hard jaws and soft jaws can be adjusted just like on a power chuck to increase the gripping range.



- 生爪與油壓夾盤生爪共用。
- Soft jaws are interchangeable with those of power chucks.

- 可替代修整油壓生爪成型盤。
- 爪仔可前後任意調整，加大夾持工件範圍。
- 生爪及硬爪與CNC車床油壓生爪共用。
- 鋼殼結構於高速迴轉時安全性高，耐磨性強，使用壽命長。
- 轉動扳手扭力較小，操作順暢。
- Can be used as "Forming plate" for machining soft jaws.
- Hard jaws and soft jaws can be adjusted just like on a power chuck to increase the gripping range.
- Hard jaws as well as soft jaws are interchangeable with those of power chucks.
- Chuck body is made of steel to enhance safety operations for high speed machining.
- The chuck handle can be operated easily and smoothly.

◆ 特別附件

OPTIONAL ACCESSORIES:

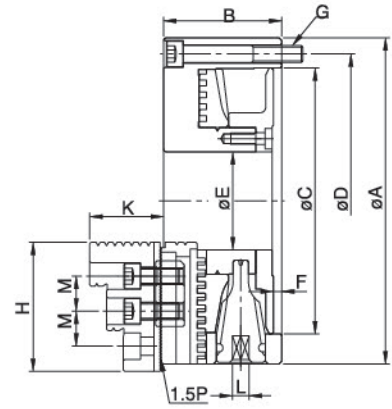
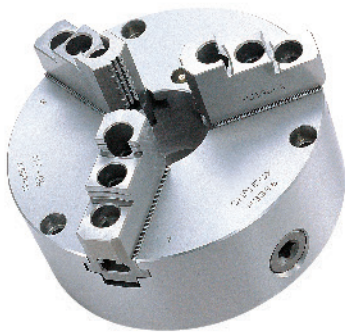


NO.36048 連結盤
Mounting plate

單位: mm

訂購編號 Order No.	型號 Model	A	B	C	D	E	F	G	H	J
36046-07	TNT-07	193	78	155	172	58	5	3-M10×P1.5	73	31
36046-09	TNT-09	233	85	190	210	70	5.5	3-M12×P1.75	95	35

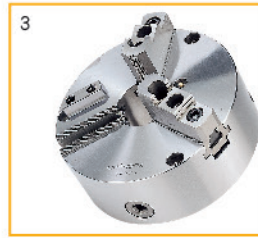
型號 Model	K	L	M	P	最高轉速(min ⁻¹) Max. Speed	外徑把握 O.D.Clamping	內徑把握 I.D.Clamping	重量(kg) Weight
TNT-07	38	11	20	12	3200 R.P.M	φ8~φ235	φ66~φ235	14.4
TNT-09	40	12	25	14	2800 R.P.M	φ11~φ280	φ85~φ280	22.3



◆ 特點配合圖示說明 Illustrate:



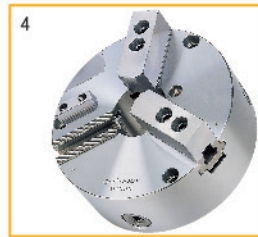
- 可替代修整油壓生爪成型盤。
- Can be used as "Forming plate" for machining soft jaws.



- 硬爪與油壓夾盤硬爪共用。
- Hard jaws are interchangeable with those of power chucks.



- 爪仔可前後任意調整加大夾持工件範圍。
- Hard jaws and soft jaws can be adjusted just like on a power chuck to increase the gripping range.



- 生爪與油壓夾盤生爪共用。
- Soft jaws are interchangeable with those of power chucks.

- 可替代修整油壓生爪成型盤。
- 爪仔可前後任意調整，加大夾持工件範圍。
- 生爪及硬爪與CNC車床油壓生爪共用。
- 鋼殼結構於高速迴轉時安全性高，耐磨性強，使用壽命長。
- 轉動扳手扭力較小，操作順暢。
- Can be used as "Forming plate" for machining soft jaws.
- Hard jaws and soft jaws can be adjusted just like on a power chuck to increase the gripping range.
- Hard jaws as well as soft jaws are interchangeable with those of power chucks.
- Chuck body is made of steel to enhance safety operations for high speed machining.
- The chuck handle can be operated easily and smoothly.

◆ 特別附件

OPTIONAL ACCESSORIES:

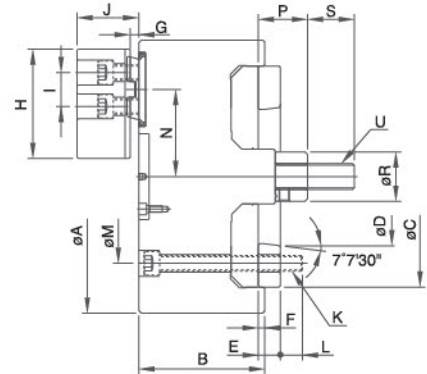
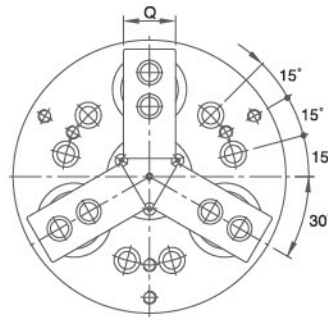


NO.36048 連結盤
Mounting plate

單位:mm

訂購編號 Order No.	型號 Model	A	B	C	D	E	F	G	H	J
36047-07	NT-07	193	78	155	172	58	5	3-M10×P1.5	73	28
36047-09	NT-09	233	85	190	210	70	5.5	3-M12×P1.75	95	32
36047-10	NT-10	275	91	230	250	89	5.5	3-M12×P1.75	101.5	37
36047-12	NT-12	310	104	260	285	105	7	3-M12×P1.75	116	47

型號 Model	K	L	M	P	最高轉速(min ⁻¹) Max. Speed	外徑把握 O.D.Clamping	內徑把握 I.D.Clamping	重量(kg) Weight
NT-07	46	11	20	12	3200 R.P.M	φ8~φ235	φ66~φ235	13.1
NT-09	52	12	25	14	2800 R.P.M	φ11~φ280	φ85~φ280	21.2
NT-10	56	12	30	16	2400 R.P.M	φ12~φ330	φ92~φ330	30.5
NT-12	67	14	30	21	2100 R.P.M	φ15~φ370	φ104~φ370	46.1



- 夾頭作徑向夾持同時強力後拉，工件不會上浮，適用於鑄件及鍛件的加工。
- 後拉式夾持將工件緊貼在基準面上，使夾持穩固，適用於重切削。
- 圓柱滑動結構，可長期使用，並確保重複夾持的優異精度。
- 準確的自定中心及強力夾持工件不上浮特性，要求長度精準的加工最適宜。
- 可採用到位偵測，配合自動化系統。
- Pull back feature of radial gripping will lead to almost no work piece uplifting displacement; Pull back power chucks are ideal for machining casting and forging parts.
- The pull back clamping force enables the work piece close the datum, so that the clamping is firm. It's applicable to heavy cutting.
- Chuck actuators with cylindrical structure are durable and ensures high gripping repeatability.
- Accurate self-centering and pull back features are adequate for precise length control machining requirements.
- Optional components can be selected for detecting the right position on an automated loading machine.

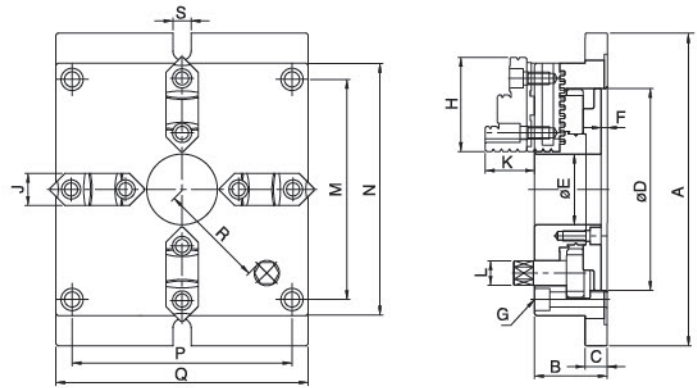
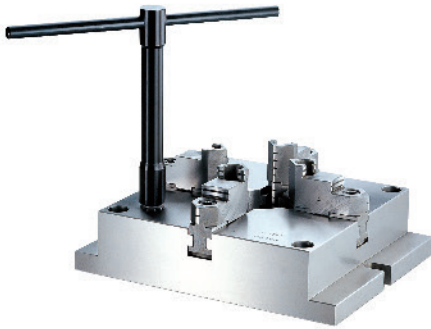
單位: mm

訂購編號 Order No.	型號 Model	A	B	C	D	E	F	G max.	G min.	H	J max.	J min.
36049-06	PL-06	169	83	140	82.563	15	5	15	5	70	46	36
36049-08	PL-08	210	97	170	106.375	17	5	16.5	6.5	84	57	47
36049-10	PL-10	254	110	220	139.719	18	5	22	6	100	68	52
36049-12	PL-12	304	125	220	139.719	18	5	21.5	5.5	120	72.5	56.5

型號 Model	I	K	L	M	N max.	N min.	P max.	P min.	Q	R	S	U
PL-06	-	6-M10×P1.5	14	104.8	56.65	54	33	23	35	32	36	M16×P2.0
PL-08	26	6-M12×P1.75	17	133.4	69.65	67	38	28	40	38	36	M20×P2.5
PL-10	32	6-M16×P2.0	24	171.4	87.8	82	48	32	50	50	46	M24×P3.0
PL-12	36	6-M16×P2.0	20	171.4	102.8	97	47	31	60	52	50	M27×P3.0

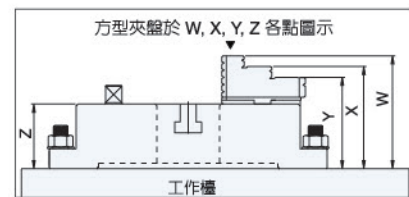
型號 Model	柱塞行程 Plunger Stroke	爪行程直徑 Jaw Stroke(Diameter)	最高迴轉速(min ⁻¹) Max. Speed	最大拉力 Max. Pull Force	最大靜夾持力 Max. Gripping Force
PL-06	10mm	5.3mm	3500 R.P.M	1420 kgf 14 KN	2950 kgf 29 KN
PL-08	10mm	5.3mm	3000 R.P.M	2240 kgf 22 KN	4890 kgf 48 KN
PL-10	16mm	11.6mm	2500 R.P.M	3160 kgf 31 KN	4990 kgf 49 KN
PL-12	16mm	11.6mm	2000 R.P.M	4480 kgf 44 KN	7240 kgf 71 KN

型號 Model	最大設定油壓壓力 Max. Hydr. Pressure	搭配油壓缸 編號/型號 Matching Cylinder	夾持範圍 Gripping Range	重量(kg) Weight
PL-06	22 kgf/cm ² 2.2 Mpa	NO. 36037-20 L1020	φ35 - φ160	15.4
PL-08	22 kgf/cm ² 2.2 Mpa	NO. 36037-25 L1225	φ40 - φ210	27.8
PL-10	30 kgf/cm ² 2.9 Mpa	NO. 36037-25 L1225	φ50 - φ254	45.9
PL-12	30 kgf/cm ² 2.9 Mpa	NO. 36037-30 L1530	φ50 - φ304	75.7



- MC均為定寸研磨方式，任何相同規格之方型夾盤W,X,Y,Z各點之高度公差為0.05mm以內。
- MC規格均可替換生爪，作不規則形狀之加工，以替代中心機大量治具，更經濟方便。
- 硬爪重複夾持之精度公差為0.02mm以內。
- 側邊平行校正後，硬爪夾持之平行公差為0.05mm以內。
- MC chucks are precisely ground, the tolerances of W,X,Y,Z among chucks are within 0.05mm.
- Soft jaws can be used alternatively for machining special shaped work pieces, to substitute for designing and making a lot of jigs for this purpose.
- The repetitive gripping accuracy with the hard jaws are within 0.02mm.
- Parallel gripping accuracy with hard jaws can be controlled within 0.05mm after aligning sides of chucks.

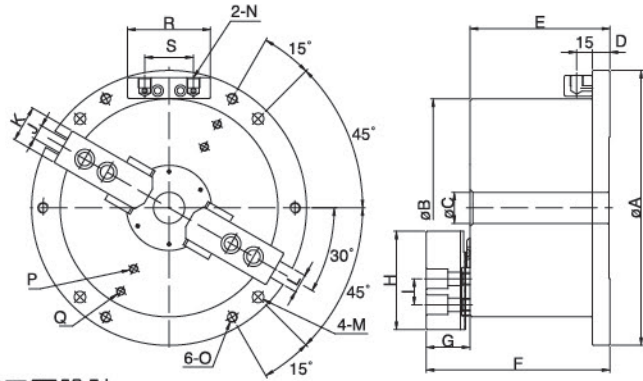
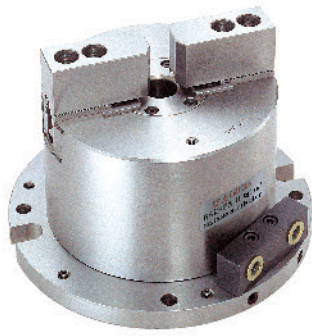
◆ 使用範例EXAMPLE:



單位:mm

訂購編號 Order No.	型號 Model	A	B	C	D	E	F	G	H	J
36050-06	MC-06	215	57	18	130	40	5.5	4-M10×P1.5	68	26
36050-08	MC-08	250	65	20	160	55	6	4-M12×P1.75	82	28
36050-10	MC-10	310	72	22	200	70	6	4-M14×P2.0	93	32
36050-12	MC-12	380	85	25	260	100	7	4-M16×P2.0	118	40

型號 Model	K	L	M	N	P	Q	R	S	外徑把握 O.D.Clamping	內徑把握 I.D.Clamping	重量(kg) Weight
MC-06	39	14	144	165	144	165	66	18	φ4~φ128	φ55~φ128	11.4
MC-08	43	17	174	200	174	200	83	18	φ5~φ162	φ62~φ162	18.6
MC-10	50	21	218	250	218	250	104	18	φ6~φ200	φ72~φ200	31.6
MC-12	56	23	274	310	274	310	135	22	φ10~φ265	φ90~φ265	56.6



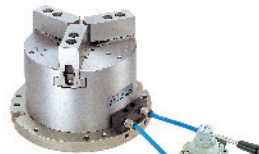
- 內藏式中空油壓夾盤適用於工作台面的鑽、銑加工而設計。
- 氣缸防鏽處理:在潮濕及工作環境較差的情況，氣缸內部經防鏽處理，部會生鏽或卡死。
- 防塵裝置:在工作檯上的鑽銑工作、切削及冷卻液不易進入夾盤內部，確保夾盤的使用壽命及精度。
- 內藏式油缸特性:把油缸直接裝置於夾頭內部，更能確保連結的穩定性、提升夾持力，適用於重切削及夾持精度的保持，倍增機械效益。
- 可採用到位偵測，配合自動化系統。
- With built-in type cylinder, it is ideal for machining application on working table.
- Rust-proof for Pneumatic Cylinder:Inside wall of cylinder being rustproof treated;cylinder can work under wet or high moisture circumstances without rusty or seized trouble.
- Dusts-proof and Waterproof:Dust-proof and waterproof structure prevents work-chips and coolant water from entering into inside of chuck cylinder to maintain its accuracy and lead to longer service life.
- Benefit of Built-in Cylinder:The cylinder is connected to chuck itself directly for obtaining better stability,less space, and higher machining efficiency.

◆ 應用範例 OPERATION EXAMPLE:

氣壓切換閥連接方式/
特殊附件

Examples of Attaching
Pneumatic Manual Switch/
Optional Accessories

● 標準配備 氣壓閥 Standard



外接氣壓手動切換閥
Split type hand control valve

● 選購配備 氣壓閥 Optional



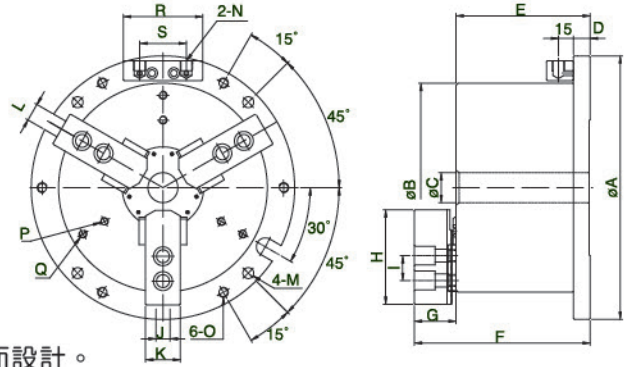
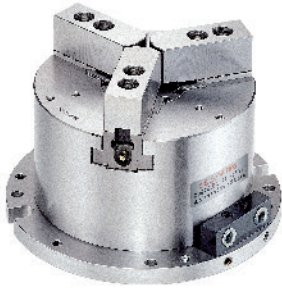
氣壓手動切換閥
Adherent type hand control valve

單位: mm

訂購編號 Order No.	型號 Model	A	B	C	D	E	F	G	H	I	J	K	L	M	N
36051-04	MOT-04A	157	115	-	15	77.5	104	26	49.5	14	10	23	13	φ9 (PCD φ135)	PT1/8
36051-05	MOT-05A	185	135	-	15	95	128	33	62	14	10	25	13	φ9 (PCD φ165)	PT1/4
36051-06	MOT-06A	224	169	25	16	118	158	40	73	20	12	31	18	φ11 (PCD φ202)	PT1/4
36051-08	MOT-08A	265	210	30	20	138	180	42	95	25	14	35	18	φ11 (PCD φ243)	PT1/4
36051-10	MOT-10A	315	254	52	23	150	196	46	110	30	16	40	18	φ13 (PCD φ285)	PT1/4

型號 Model	O	P	R	S	Q	活塞面積 Piston Area	柱塞行程 Plunger Stroke	爪行程直徑 Jaw Stroke(Diameter)
MOT-04A	M8×P1.25	2-M8×P1.25(PCD φ90)	64	47	-	57cm ²	9mm	3.8mm
MOT-05A	M8×P1.25	2-M8×P1.25(PCD φ100)	80	47	-	74cm ²	10mm	5.4mm
MOT-06A	M10×P1.5	2-M8×P1.25(PCD φ134)	80	47	-	97cm ²	12mm	5.5mm
MOT-08A	M10×P1.5	2-M10×P1.5(PCD φ136)	80	47	2-M10×P1.5(PCD φ186)	156cm ²	16mm	7.4mm
MOT-10A	M12×P1.75	2-M12×P1.75(PCD φ170)	80	47	2-M12×P1.75(PCD φ230)	235cm ²	19mm	8.8mm

型號 Model	最大靜夾持力 Max. Gripping Force		最大設定油壓壓力 Max. Hydr. Pressure		空壓夾持力 (7kgf/cm ²)(0.7Mpa) Gripping Force At Air Pressure		夾持範圍 Gripping Range	重量(kg) Weight
MOT-04A	1900 kgf	18.6 KN	12 kgf/cm ²	1.2 Mpa	1100 kgf	10.8 KN	φ9~φ115	6.9
MOT-05A	2620 kgf	25.6 KN	16 kgf/cm ²	1.6 Mpa	1300 kgf	12.7 KN	φ12~φ135	11.2
MOT-06A	4030 kgf	39.5 KN	16 kgf/cm ²	1.6 Mpa	2000 kgf	19.6 KN	φ15~φ169	21
MOT-08A	6480 kgf	63.5 KN	16 kgf/cm ²	1.6 Mpa	3300 kgf	32.3 KN	φ20~φ210	36.8
MOT-10A	9760 kgf	95.6 KN	16 kgf/cm ²	1.6 Mpa	4800 kgf	47 KN	φ33~φ254	56.4



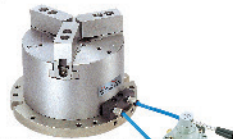
- 內藏式中空油壓夾盤適用於工作台面的鑽、銑加工而設計。
- 氣缸防鏽處理:在潮濕及工作環境較差的情況，氣缸內部經防鏽處理，部會生鏽或卡死。
- 防塵裝置:在工作檯上的鑽銑工作、切削及冷卻液不易進入夾盤內部，確保夾盤的使用壽命及精度。
- 內藏式油缸特性:把油缸直接裝置於夾頭內部，更能確保連結的穩定性、提升夾持力，適用於重切削及夾持精度的保持，倍增機械效益。
- 可採用到位偵測，配合自動化系統。
- With built-in type cylinder, it is ideal for machining application on working table.
- Rust-proof for Pneumatic Cylinder:Inside wall of cylinder being rustproof treated;cylinder can work under wet or high moisture circumstances without rusty or seized trouble.
- Dusts-proof and Waterproof:Dust-proof and waterproof structure prevents work-chips and coolant water from entering into inside of chuck cylinder to maintain its accuracy and lead to longer service life.
- Benefit of Built-in Cylinder:The cylinder is connected to chuck itself directly for obtaining better stability,less space, and higher machining efficiency.

◆ 應用範例 OPERATION EXAMPLE:

氣壓切換閥連接方式/
特殊附件

Examples of Attaching
Pneumatic Manual Switch/
Optional Accessories

● 標準配備 氣壓閥 Standard



外接氣壓手動切換閥
Split type hand control valve

● 選購配備 氣壓閥 Optional



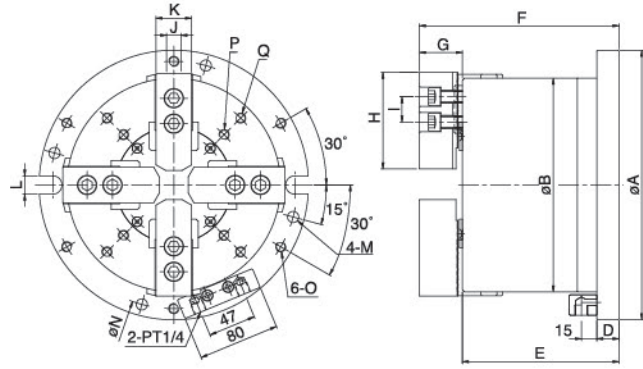
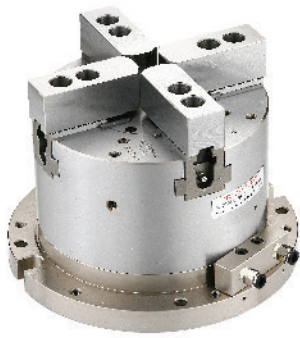
氣壓手動切換閥
Adherent type hand control valve

單位: mm

訂購編號 Order No.	型號 Model	A	B	C	D	E	F	G	H	I	J	K	L	M	N
36052-04	MO-04A	157	115	-	15	77.5	104	26	49.5	14	10	23	13	φ9 (PCD φ135)	PT1/8
36052-05	MO-05A	185	135	-	15	95	128	33	62	14	10	25	13	φ9 (PCD φ165)	PT1/4
36052-06	MO-06A	224	169	25	16	118	158	40	73	20	12	31	18	φ11 (PCD φ202)	PT1/4
36052-08	MO-08A	265	210	30	20	138	180	42	95	25	14	35	18	φ11 (PCD φ243)	PT1/4
36052-10	MO-10A	315	254	52	23	150	196	46	110	30	16	40	18	φ13 (PCD φ285)	PT1/4
36052-12	MO-12A	375	304	80	23	165	219	54	129	30	21	50	18	φ17 (PCD φ340)	PT3/8

型號 Model	O	P	R	S	Q	活 塞 面 積 Piston Area	柱 塞 行 程 Plunger Stroke	爪 行 程 直 徑 Jaw Stroke(Diameter)
MO-04A	M8×P1.25	3-M8×P1.25(PCD φ90)	64	47	-	57cm ²	9mm	3.8mm
MO-05A	M8×P1.25	3-M8×P1.25(PCD φ100)	80	47	-	74cm ²	10mm	5.4mm
MO-06A	M10×P1.5	3-M8×P1.25(PCD φ134)	80	47	-	97cm ²	12mm	5.5mm
MO-08A	M10×P1.5	3-M10×P1.5(PCD φ136)	80	47	3-M10×P1.5(PCD φ186)	156cm ²	16mm	7.4mm
MO-10A	M12×P1.75	3-M12×P1.75(PCD φ170)	80	47	3-M12×P1.75(PCD φ230)	235cm ²	19mm	8.8mm
MO-12A	M16×P2.0	3-M12×P1.75(PCD φ200)	80	55	3-M12×P1.75(PCD φ260)	292cm ²	23mm	10.6mm

型號 Model	最大靜夾持力 Max. Gripping Force		最大設定油壓壓力 Max. Hydr. Pressure		空壓夾持力(7kgf/cm ²)(0.7Mpa) Gripping Force At Air Pressure		夾持範圍 Gripping Range	重量(kg) Weight
MO-04A	2400 kgf	23.5 KN	15 kgf/cm ²	1.5 Mpa	1100 kgf	10.8 KN	φ9~ φ115	7
MO-05A	3285 kgf	32.2 KN	20 kgf/cm ²	2.0 Mpa	1300 kgf	12.7 KN	φ12~ φ135	11.2
MO-06A	5040 kgf	49.4 KN	20 kgf/cm ²	2.0 Mpa	2000 kgf	19.6 KN	φ15~ φ169	21
MO-08A	8100 kgf	79.4 KN	20 kgf/cm ²	2.0 Mpa	3300 kgf	32.3 KN	φ20~ φ210	36.8
MO-10A	12210 kgf	119.7 KN	20 kgf/cm ²	2.0 Mpa	4800 kgf	47 KN	φ33~ φ254	56.4
MO-12A	14500 kgf	142.1 KN	20 kgf/cm ²	2.0 Mpa	5100 kgf	50 KN	φ40~ φ304	88.5

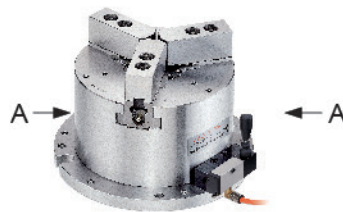


- 兩軸自動求心氣壓夾盤專供中心機及各式工作檯面的加工而設計，在X,Y兩軸間同時夾持任何異形工件具快速自定工件中心之功能。
- 氣缸防鏽處理:在潮濕及工作環境較差的情況，氣缸內部經防鏽處理，部會生鏽或卡死。
- 防塵裝置:在工作檯上的鑽銑工作、切削及冷卻液不易進入夾盤內部，確保夾盤的使用壽命及精度。
- 多邊夾持、自定中心:有別於虎鉗的單一軸向夾持，兩軸自動求心氣壓夾盤分別在X,Y兩軸向分割成兩組夾持動作，且同時自定工件中心，能快速準確的固定工件，在任一軸向銑削均能達到穩固的效果。
- 2 actuating axes self-centering solid air chuck fixtures is great for machining center. Two pairs of jaws clamp one after another to assure a workpiece to be locked completely.
- Rust-proof for Pneumatic Cylinder:Inside wall of cylinder being rustproof treated;cylinder can work under wet or high moisture circumstances without rusty or seized trouble.
- Dusts-proof and Waterproof:Dust-proof and waterproof structure prevents work-chips and coolant water from entering into inside of chuck cylinder to maintain its accuracy and lead to longer service life.
- 4-jaws Clamping and Self-centering:4-jaws clamping are steadier for machining. Two pairs of jaws are moved independently to assure complete lock and self-centering.

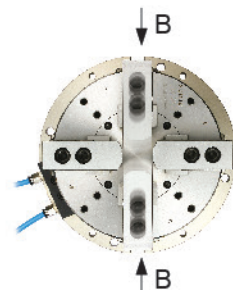
◆ 應用範例 OPERATION EXAMPLE:

快速、準確、自動化
Speed, Accurate, Automatic

兩段分割夾持，自定中心
4-jaws clamping and self-center



活塞A夾持
Piston "A" Clamping



活塞B夾持
Piston "B" Clamping

單位:mm

訂購編號 Order No.	型號 Model	A	B	D	E	F	G	H	I	J	K	L	M	N	O
36053-56	MA-06	224	175	20	130	170	40	73	20	12	31	18	φ11	φ202	M10×P1.5(PCD φ202)
36053-58	MA-08	265	210	22	154	196	42	95	25	14	35	18	φ11	φ243	M10×P1.5(PCD φ243)
36053-60	MA-10	315	250	25	176	222	46	110	30	16	40	18	φ13	φ285	M12×P1.75(PCDφ285)

型號 Model	P		Q		柱塞行程 Plunger Stroke	A活塞面積 Piston Area	
	推力側 Push Side	拉力側 Pull Side	爪行程直徑 Jaw Stroke(Diameter)	空壓夾持力 Gripping Force		At Air Pressure	夾持範圍 Gripping Range
MA-06	4-M8×P1.25 (PCD φ124)		4-M8×P1.25 (PCD φ156)		12mm	127cm ²	108cm ²
MA-08	4-M10×P1.5 (PCD φ140)		4-M10×P1.5 (PCD φ186)		16mm	184cm ²	157cm ²
MA-10	4-M10×P1.5 (PCD φ176)		4-M10×P1.5 (PCD φ224)		19mm	270cm ²	239 cm ²

型號 Model	B活塞面積 Piston Area		爪行程直徑 Jaw Stroke(Diameter)	空壓夾持力 Gripping Force	At Air Pressure	夾持範圍 Gripping Range	重量(kg) Weight
	推力側 Push Side	拉力側 Pull Side					
MA-06	122cm ²	117cm ²	5.5mm	4500 kgf	44 KN	φ25~φ175	24.8
MA-08	176cm ²	169cm ²	7.4mm	6400 kgf	63 KN	φ30~φ210	41.3
MA-10	257cm ²	241cm ²	8.8mm	9500 kgf	93 KN	φ35~φ250	65.6